

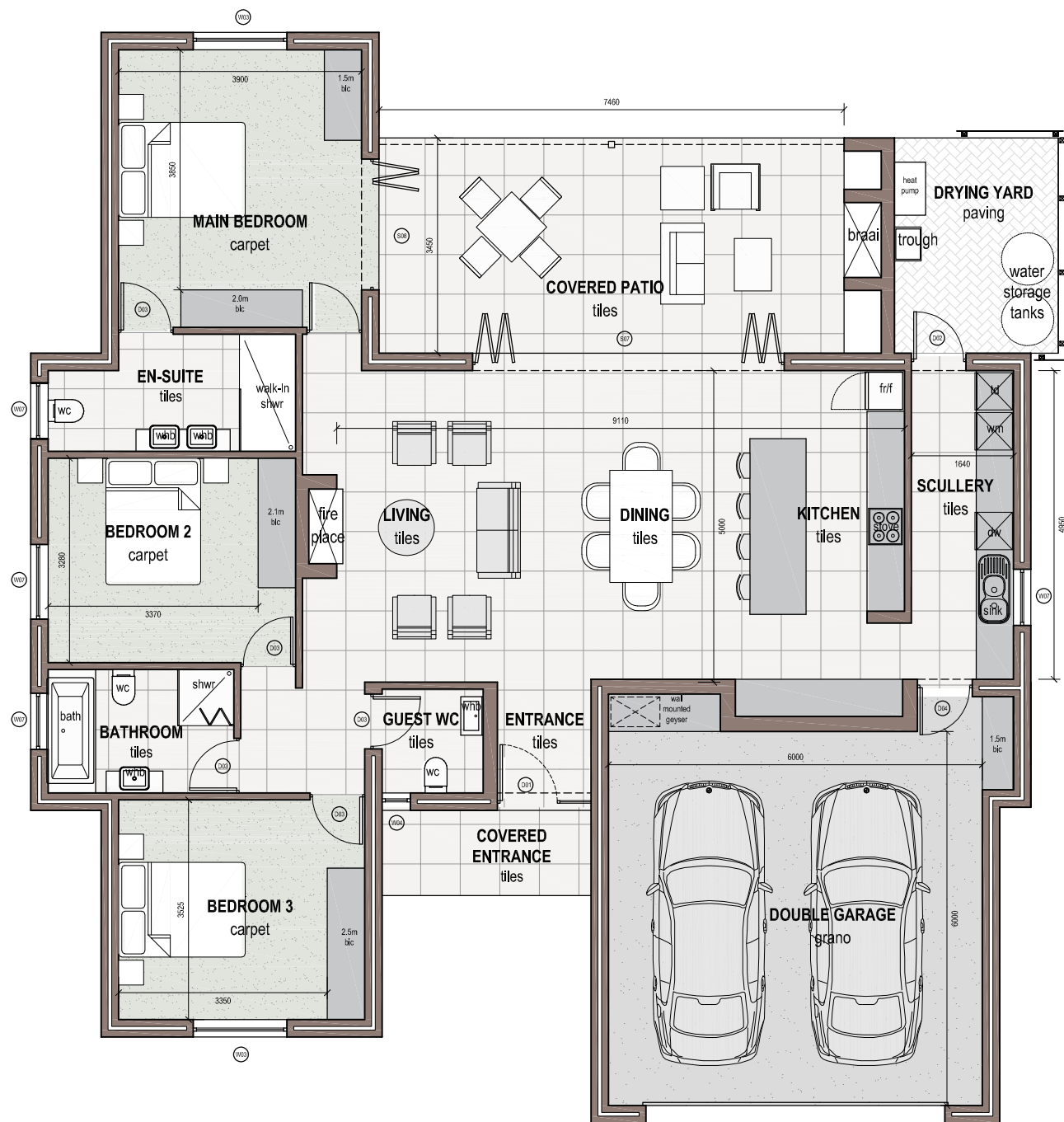


**The Plettenberg Manor**  
**Executive Retirement Resort**  
**TYPE : ALBATROSS - A1**

3 Bedroom , 2 Bathroom, Double Garage



TYPICAL ELEVATION  
 scale 1 : 100



GROUND FLOOR PLAN  
 scale 1 : 100

NOTE: AREAS INDICATED ON PLAN ARE INTERNAL AREAS ONLY. AREAS IN THE SUMMARY SCHEDULE INCLUDE EXTERNAL WALLS.  
 REFER TO SITE PLAN FOR ACCURATE ORIENTATION OF DWELLING.  
 FURNITURE AND FITTINGS FOR ILLUSTRATION PURPOSES ONLY AND ARE NOT PART OF THE CONTRACT.  
 ALL BIC DIMENSIONS MAY VARY DUE TO PLASTER THICKNESS.  
 THIS PLAN INCLUDING PAVING, LANDSCAPING AND THE LIKE IS INDICATIVE BEING FOR MARKETING PURPOSES ONLY AND ARE SUBJECT TO FINAL AMENDMENTS.  
 LEVELS ARE APPROXIMATE AS PER SITE DEVELOPMENT PLAN AND WILL BE FINALISED ON SITE BY THE DEVELOPER AND CONTRACTOR.

- NOTE : THIS IS A MARKETING PLAN ONLY**  
**OPTIONAL EXTRAS MIGHT INCLUDE THE FOLLOWING :**
- FIRE PLACE IN LIVING AREA
  - BUILT IN BRAAI ON PATIO
  - CEILING TO PATIO ROOF
  - FOLDING STACKING DOOR - PATIO & BEDROOM
  - SCREEN WALL WITH BRAAI



AREA SCHEDULE		UNIT TYPE	REVISION & DATE
DWELLING	144.0m <sup>2</sup>	<b>A1</b>	0
DOUBLE GARAGE	43.7m <sup>2</sup>		
COVERED ENTRANCE	4.9m <sup>2</sup>		
COVERED PATIO	26.8m <sup>2</sup>		
<b>TOTAL</b>	<b>219.4m<sup>2</sup></b>	SOUTH ENTRY	<b>15.01.2019</b>

**architech**  
 UNIT 1, PARK CENTRAL, 21 NEW STREET, DURBANVILLE  
 t: 021 823 7676 f: 086 600 8808  
 e: info@architech.co.za w: www.architech.co.za

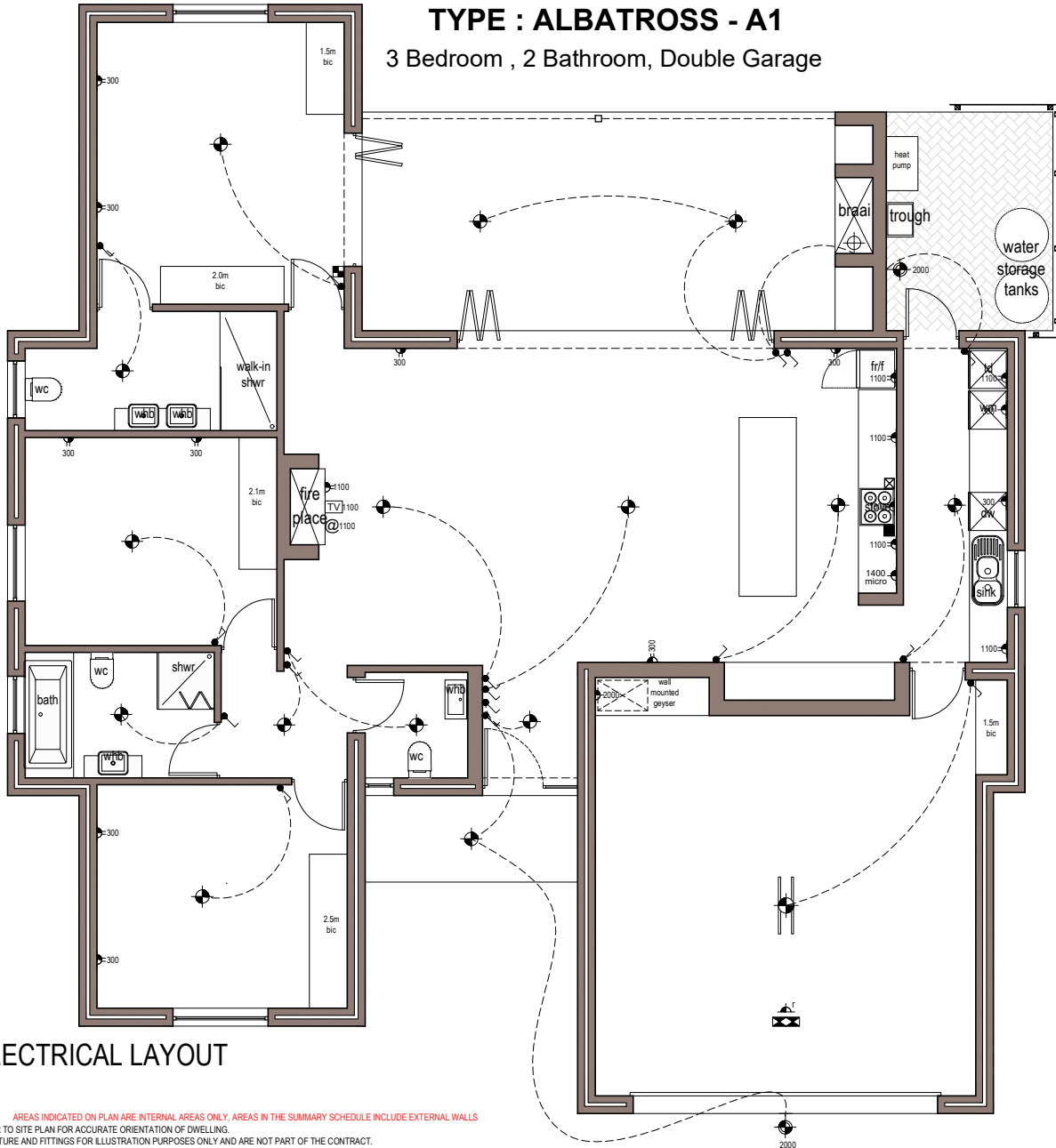


# The Plettenberg Manor

## Executive Retirement Resort

### TYPE : ALBATROSS - A1

3 Bedroom , 2 Bathroom, Double Garage



## ELECTRICAL LAYOUT

**NOTE:** AREAS INDICATED ON PLAN ARE INTERNAL AREAS ONLY, AREAS IN THE SUMMARY SCHEDULE INCLUDE EXTERNAL WALLS. REFER TO SITE PLAN FOR ACCURATE ORIENTATION OF DWELLING. FURNITURE AND FITTINGS FOR ILLUSTRATION PURPOSES ONLY AND ARE NOT PART OF THE CONTRACT. ALL BIC DIMENSIONS MAY VARY DUE TO PLASTER THICKNESS. THIS PLAN INCLUDING PAVING, LANDSCAPING AND THE LIKE IS INDICATIVE BEING FOR MARKETING PURPOSES ONLY AND ARE SUBJECT TO FINAL AMENDMENTS. LEVELS ARE APPROXIMATE AS PER SITE DEVELOPMENT PLAN AND WILL BE FINALISED ON SITE BY THE DEVELOPER AND CONTRACTOR.

ELECTRICAL LEGEND	
height	SPECIFIED HEIGHT IN MILLIMETERS ABOVE FFL - INDICATED NEXT TO SYMBOLS ON DRAWING WHERE APPLICABLE
	LIGHT SWITCH @ 1200mm ABOVE FFL
	2-WAY LIGHT SWITCH @ 1200mm ABOVE FFL
	SINGLE 15amp POWER OUTLET @ SPECIFIED HEIGHT
	SINGLE 15amp POWER OUTLET IN ROOF SPACE
	DOUBLE 15amp POWER OUTLET @ SPECIFIED HEIGHT
	CEILING MOUNTED DOUBLE LINEAR FLUORESCENT LUMINAIRE
	CEILING MOUNTED INCANDESCENT LUMINAIRE
	WALL MOUNTED INCANDESCENT LUMINAIRE @ SPECIFIED HEIGHT

	WATERPROOF WALL MOUNTED INCANDESCENT LUMINAIRE @ SPECIFIED HEIGHT		
	TV AERIAL OUTLET POINT @ SPECIFIED HEIGHT		
	TELEPHONE OUTLET POINT @ SPECIFIED HEIGHT		
	DISTRIBUTION BOARD		
	PREPAID METER		
	STOVE ISOLATOR		HEAT PUMP ISOLATOR
	STOVE CONNECTOR		
	INTERNET CONNECTION @ SPECIFIED HEIGHT		
	DOOR BELL		
	ALARM KEYPAD		
	GARAGE DOOR OPENER AND POWER POINT		

LEGEND			
	EXTERNAL TAP	bic	BUILT IN CUPBOARD
	IRRIGATION POINT	wip	WALK-IN PANTRY
	SINK		SHOWER ROSE
	BR BROOM CUPBOARD	linen	LINEN CUPBOARD
	fr/f FRIDGE/FREEZER	hwst	HOT WATER STORAGE TANK
	st STOVE	hpcu	HEAT PUMP CONDENSER UNIT
	wm WASHING MACHINE	rwdp	RAIN WATER DOWN PIPE
	td TUMBLE DRYER	g	GULLEY
	dw DISH WASHER	-X	SHOWER MIXER
	micro MICROWAVE		